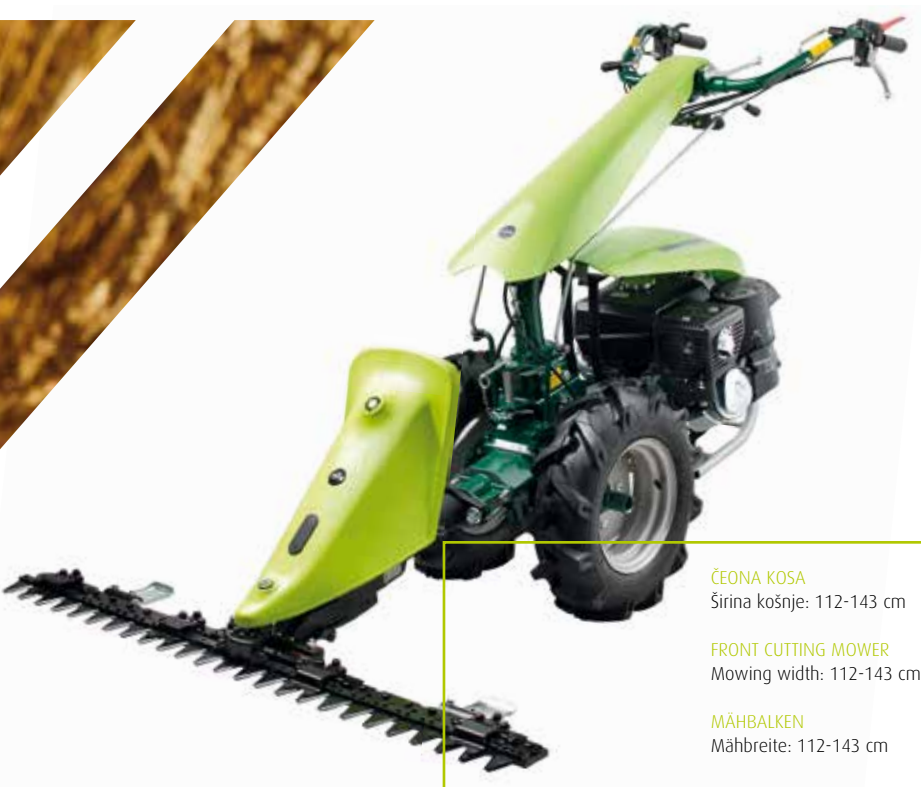




motokultivator
two-wheel tractor
einachsschlepper

Mondial Greeny





ČEONA KOSA
Širina košnje: 112-143 cm

FRONT CUTTING MOWER
Mowing width: 112-143 cm

MÄHBALKEN
Mähbreite: 112-143 cm

VRSTE REZNIH
MECHANIZMA:

SA ZAŠTITNIM
PRSTIMA
BEZ ZAŠTITNIH
PRSTIJU
DVOSTRUKI REZNI
MECHANIZAM

TYPES OF CUTTING
MECHANISM:

CUTTER BAR WITH
PROTECTIVE
FINGERS
CUTTER BAR
DOUBLE CUTTER
BAR

MÄHBALKEN
TYPEN:

FINGERMÄHBALKEN
UNIVERSALMÄHBALKEN
KOMMUNALMÄHBALKEN



ROTACIONA KOSA
RK-60
Širina košnje: 60 cm

ROTARY MOWER
RK-60
Mowing width: 60 cm

SICHELMÄHER
RK-60
Mähbreite: 60 cm



PLUG
PR-4

RIDGER PLOUGH
PR-4

PFLUG
PR-4



ROTARY TILLER
PKM
Working width:
40 - 70 cm

ROTACIONA KOPAČICA
PKM
Radna širina:
40 - 70 cm

BODENFRÄSE
PKM
Arbeitsbreite:
40 - 70 cm



UTEZI ZA KOTAČE T-15
Težina: 17 kg

WHEEL BALLASTS T-15
Weight: 17 kg

RADGEWICHTE T-15
Gewicht: 17 kg



KOTAČIĆ ZA
PRIJEVOZ KOPAČICE

WHEEL FOR ROTARY
TILLER
TRANSPORTATION

TRANSPORTREIFEN FÜR
DIE FRÄSE



RAHLJIVAČ R-5

GRUBBER WITH
5 ANCHORS R-5

GRUBBER R-5

VUČNA PRIKOLICA
PV-300

Dimenzije sanduka:
1100x1400 mm
Nosivost: 500 kg
Kotači: 5.00x10", 5.00x12"

ANHÄNGER
PV-300

Ladefläche:
1100x1400 mm
Ladekapazität: 500 kg
Bereifung: 5.00x10", 5.00x12"

TOWED TRAILER
PV-300

Box dimensions:
1100x1400 mm
Carrying capacity: 500 kg
Wheels: 5.00x10", 5.00x12"



VADILICA KRUMPIRA
VK-4
Širina: 80 cm

POTATO DIGGER
VK-4
Width: 80 cm

KARTOFFELRODER
VK-4
Breite: 80 cm

Mondial
Greeny

Tehnički podaci

Motor:	4-taktni benzinski ili dizel, 4.9-6.5 kW, 3.600 okr/min, zračno hlađen.
Starter:	ručni, poluautomatski ili pomoću elektro pokretača.
Spojka:	konusna, suha s komandom na ručkama.
Mjenjač:	4 brzine (3 za vožnju naprijed, 1 za vožnju natrag, u oba smjera vožnje).
Vratilo kotača:	- jednodijelno - s mogućnošću deblokiranja kotača preko poluge na ručkama, - diferencijal - s mogućnošću blokiranja i deblokiranja preko dvije poluge na ručkama.
Pogon:	1 nezavisna brzina vrtnje 790 okr/min.
Ručke za upravljanje:	podesive po visini i okretljive za 180°.
Kotači:	s gumama 5.00x10".
Sigurnosni uređaji:	MOTOR-STOP trenutno isključuje motor, sprječavajući svaku moguću nezgodu ukoliko ručke za upravljanje slučajno izmaknu iz ruku korisnika. Poluga koja sprječava uključivanje hoda unazad kada je uključeno vratilo pogona kopačice.
Težina:	115 kg (s dizel motorom i 5.00x10" kotačima).

Technical features

Engine:	4-stroke gasoline engine or diesel 4.9-6.5 kW, 3.600 rpm, air-cooled.
Starter:	rope, recoil or electrical start.
Clutch:	dry clutch with manual control.
Transmission:	4 speeds (3 forward speeds, 1 reverse, in both directions)
Drive axle:	- single drive axle – with unlocking possibility through lever on handlebars, - differential – with locking and unlocking possibility through levers on handlebars.
Power take off:	1 independent speed at 790 rpm.
Handlebars:	adjustable in height, sideways and 180° reversible.
Wheels:	tires 5.00x10".
Safety device:	MOTOR-STOP shuts down the engine immediately, thus preventing any possible accident, should the handlebars accidentally slip out of the operator's hands. A device prevents reverse gear from engaging when power take-off is activated.
Weight:	115 kg (with diesel engine and 5.00x10" tires).

Technische Merkmale

Motor:	4-Takt-Benzin oder Dieselmotor, 4.9-6.5 KW, 3.600 U/Min., Luftkühlung.
Starter:	Seilstart, Reversierstarter oder Elektrostarter.
Kupplung:	Einscheiben Trockenkupplung mit Handbetätigung
Getriebe:	4 Gänge (3 Vor-und 1 Rück Wärtsgänge in beide Richtungen)
Achsantrieb:	- einteilig –mit der Option die Reifen über die Hebel an den Lenkstangen zu deblockieren, - Differential – mit der Option des Blockierens und Entriegeln über zwei Hebel an den Lenkstangen.
Zapfwelle / PTO:	Eine unabhängige Drehgeschwindigkeit 790 U/Min.
Lenkstange:	höhenverstellbar und um 180° schwenkbar.
Bereifung:	5.00x10".
Sicherheitsvorrichtung:	MOTOR-STOP, stoppt den Motor sofort, verhindert jede Art von Unfällen falls die Lenkstangengriffe zufällig losgelassen werden. Bei eingeschalteter Zapfwelle wird das Einlegen des Rückwärtsganges blockiert.
Gewicht:	115 kg (mit Dieselmotor und 5.00x10" Bereifung).